

2017 PROFILE

2017 HIROSAKI



UNIVERSITY



2017 Overview
NATIONAL UNIVERSITY CORPORATION
HIROSAKI UNIVERSITY

Ideals and Principles

Hirosaki University has, in the spirit of the Fundamental Law of Education, established the following institutional goals: 1) to incorporate extensive bodies of knowledge into our campus culture; 2) to engage in the teaching of and research in a broad range of specialized scholarly fields; 3) to educate persons of character and integrity who can contribute to human culture.

Fundamental Goals: The Hirosaki University Vision of the Future

Hirosaki University, in its role as one of the comprehensive public universities in the north of Japan, has set as its foundation a commitment to serve as a core actor for regional revitalization. Taking this commitment into consideration, we established four strategic areas of concentration, renewable energy, the environment, radiation emergency medicine, and food, positioning them as objectives in the second medium-term plan. We have subsequently integrated these strategic and related themes into our research and educational programs. We have also made great headway in establishing ties with local organizations and governmental bodies. Moreover, as we enter the third round of medium-term objectives, we will continue to contribute to local society through human resource development and the fostering of innovation. Hirosaki University has recently implemented a university-wide reorganization. We have 1) strengthened human resource development programs in the fields of science, technology and agriculture that contribute to innovation, 2) made qualitative improvements in the teacher training program for elementary school teachers, and 3) built up both the educational and research arms of the graduate schools. Moreover, among our third medium-term objectives, we will continually review the themes and reevaluate and reform the system by which research is implemented in the original four core areas of concentration. Furthermore, although we have independently implemented university governance reforms through wide-ranging on-campus discussion and debate, we must continue to verify and reexamine these outcomes. We must do so in order to enhance the functioning of and to implement the reforms instituted under the management system that was introduced after the establishment of the national university corporation system. Ultimately, our mission is to live up to our slogan of “communicating to the world; creating with our community”

Education · Research Organization

With the successful completion of the above-mentioned reorganization of the educational and research system, we must now turn to meet the challenges of globalization, low birthrates and an aging society as well as the need for innovation creation, challenges not only to Hirosaki University and the surrounding region, but to the nation as a whole. Moreover, in the face of recent scientific and technological advances, there has been a shift towards an emphasis on post-graduate education, which has inevitably come to serve as the linchpin of higher education. We are therefore reexamining our postgraduate educational and research programs, while remaining conscious of the continuity that must exist between undergraduate and postgraduate study.

Educational Reform

Hirosaki University, in its role as a core actor in the regional revitalization process, has a major responsibility to train future local leaders who can address and resolve regional issues from a truly global perspective. However, in order to take advantage of the specialized knowledge and technological know-how of our faculty and other researchers, we must first cultivate the basic knowledge and cultural understanding that serve as the foundation of advanced study. In this sense, the role of liberal arts education in the formation of harmonious human relations is critical. Moreover, in order to best navigate the educational reform we find ourselves a part of, we must reinforce our educational infrastructure, make improvements in the way we select students for admission, tighten performance evaluation, strengthen active learning programs, promote learning that is designed by students themselves, and strengthen the student support system.

Promotion of Research

We consider the promotion of basic research, research that is recognized internationally as well as research that contributes to regional revitalization to be essential elements of our mission as a university. With this in mind, we offer support to young researchers, promote international research exchange, and encourage the securing of competitive research funds and the creation and utilization of intellectual property. In addition, we will continue to promote research in the areas we have designated as strategic areas of concentration: renewable energy, the environment, radiation emergency medicine, and food.

Regional Cooperation and Regional Contribution

To fulfill our role as a core actor in the regional revitalization process, we will continue to strengthen our ties with local governments, companies and citizens groups. With respect to education, we are incorporating regional issues into our curriculum through active-learning and other pedagogical approaches that encourage students to think about and offer solutions to local and regional issues. As far as research is concerned, we are contributing to innovation creation through joint research projects with the local community. In addition, we are cooperating with other institutions of higher learning in the region, and are actively involved in joint educational and research activities that contribute to regional revitalization.

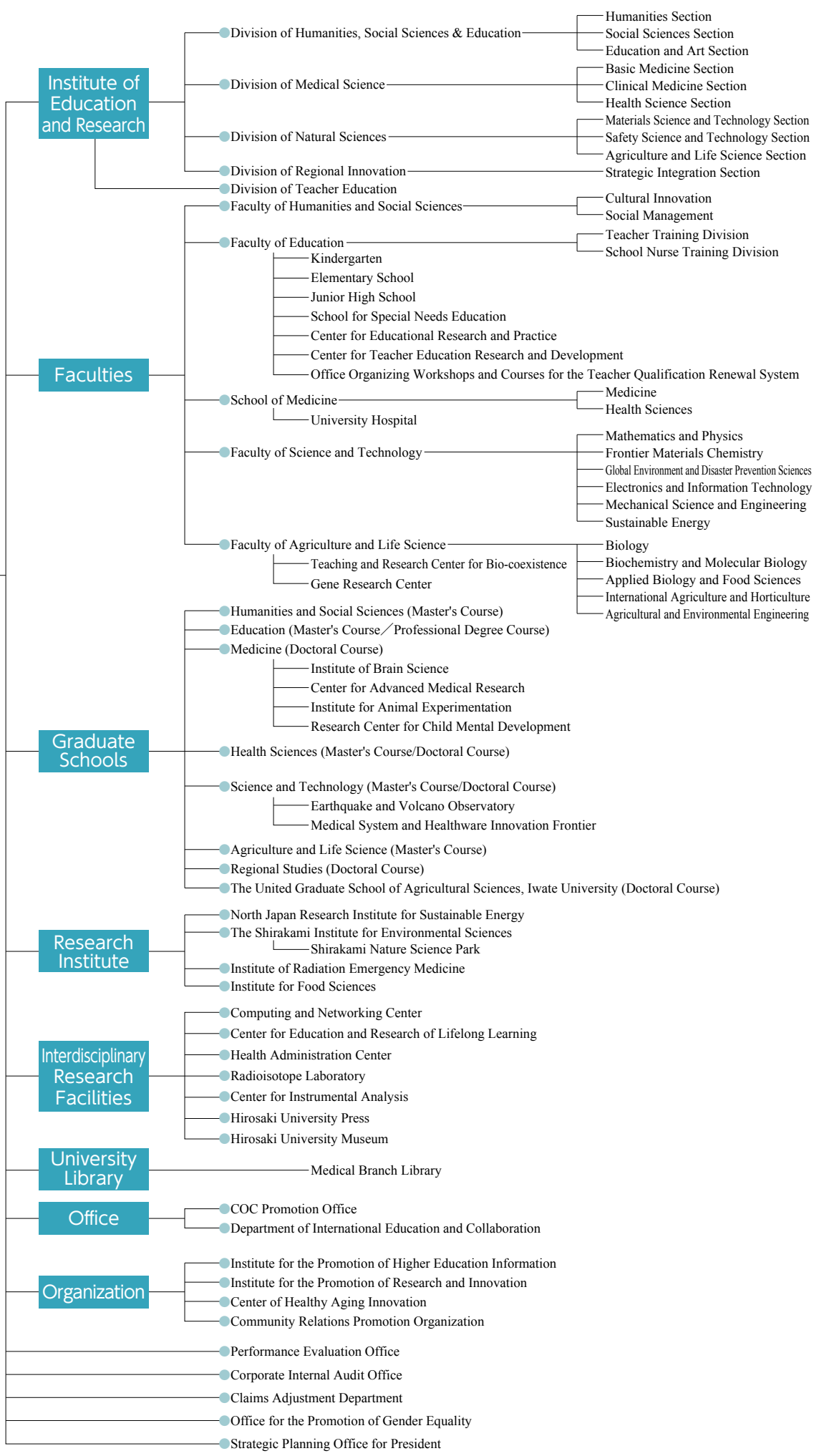
Globalization

International academic exchange and the fostering of a global perspective has become an important issue for local communities as well as for the nation as a whole. Therefore, we here at Hirosaki University recognize the need to accelerate our own globalization. In addition to the general strengthening of education and research programs, we are working to enhance the internationalization and diversity of our campus as well as to offer support to students who wish to gain overseas experience.

Management

In order to resolve outstanding issues and realize our institutional goals, we will continue to seek university-wide consensus under the leadership of the president. Moreover, given the challenges facing national university corporations throughout the country, we must continue to constantly review and reevaluate our management practices and foster a common awareness and sense of unity amongst the members of our university community.

Hirosaki University



President, Executive Director, Auditor

President		Executive Director and Vice President		Auditor		Assistant to the President		Vice Executive Director		Total	
M	F	M	F	M	F	M	F	M	F	M	F
1	–	6	1	1	1	5	1	5	–	18	3

Note: Part-time positions are shown in ★ and are included in the total number

★1

★4

★2

Note: For Vice Presidents, Assistants to the President, and Vice Executive Directors, numbers include cases where one person holds more than one position

Divisions	Professors		Associate Professors		Lecturers		Assistant Professors		Research Associates		Teachers of Attached School		Subtotal		Other Staff		Total		Statistics
	M	F	M	F	M	F	M	F	M	F	M	F	M	F	M	F	M	F	
Total Number of Present Employees	195	23	163	33	89	29	155	48	34	20	45	53	681	206	357	708	1,038	914	1,952
Administration Bureau	–	–	–	–	–	–	–	–	–	–	–	–	–	–	118	51	118	51	169
Faculty of Humanities and Social Sciences	24	7	23	7	11	2	–	–	–	–	–	–	58	16	4	4	62	20	82
Faculty of Education	36	7	21	5	11	7	–	–	–	1	45	53	113	73	11	4	124	77	201
Graduate School of Medicine	36	–	27	2	20	1	54	17	11	7	–	–	148	27	11	7	159	34	193
Graduate School of Health Sciences	19	9	7	7	14	8	13	10	2	4	–	–	55	38	7	1	62	39	101
University Hospital	–	–	9	1	27	7	49	15	20	8	–	–	105	31	159	615	264	646	910
Graduate School of Science and Technology	40	–	35	3	3	–	16	1	1	–	–	–	95	4	15	8	110	12	122
Faculty of Agriculture and Life Science	26	–	28	4	–	–	14	1	–	–	–	–	68	5	18	5	86	10	96
Graduate School of Regional Studies	1	–	2	–	–	–	–	–	–	–	–	–	3	–	–	–	3	–	3
North Japan Research Institute for Sustainable Energy	4	–	4	–	–	–	–	–	–	–	–	–	8	–	–	–	8	–	8
The Shirakami Institute for Environmental Sciences	1	–	1	–	–	–	1	–	–	–	–	–	3	–	–	–	3	–	3
Institute of Radiation Emergency Medicine	3	–	–	–	–	–	3	–	–	–	–	–	6	–	3	–	9	–	9
Institute for Food Sciences	1	–	2	–	–	–	–	1	–	–	–	–	3	1	–	–	3	1	4
Center for Education and Research of Lifelong Learning	–	–	–	–	1	–	–	–	–	–	–	–	1	–	–	–	1	–	1
Health Administration Center	1	–	–	1	–	1	–	–	–	–	–	–	1	2	–	2	1	4	5
Radioisotope Laboratory	–	–	–	–	–	–	–	–	–	–	–	–	–	–	–	1	–	1	1
University Library	–	–	–	–	–	–	–	–	–	–	–	–	–	–	7	10	7	10	17
Department of International Education and Collaboration	–	–	2	2	–	–	–	1	–	–	–	–	2	3	–	–	2	3	5
Institute for the Promotion of Higher Education Innovation	1	–	1	1	1	2	2	–	–	–	–	–	5	3	–	–	5	3	8
Institute for the Promotion of Research and Innovation	1	–	–	–	–	–	–	–	–	–	–	–	1	–	–	–	1	–	1
Center of Healthy Aging Innovation	1	–	1	–	1	1	1	1	–	–	–	–	4	2	–	–	4	2	6
Aomori Campus	–	–	–	–	–	–	–	–	–	–	–	–	–	–	4	–	4	–	4
COC Promotion office	–	–	–	–	–	–	2	–	–	–	–	–	2	–	–	–	2	–	2
Office for the Promotion of Gender Equality	–	–	–	–	–	–	–	1	–	–	–	–	–	1	–	–	–	1	1

Note: Numbers for staff working in the Corporate Internal Audit Office and COC Promotion Office, Department of International Education and Collaboration, Strategic Planning Office for President are included in the numbers for the Administration Bureau.

Undergraduates

Faculties	Departments and Courses	Annual Admission Capacity	Second year Transfer Student	Third year Transfer Student	Enrollment Capacity	Actual Enrollment												Total
						Freshmen		Sophomores		Juniors		Seniors		5th year		6th year		
						M	F	M	F	M	F	M	F	M	F	M	F	
Humanities and Social Sciences	Cultural Innovation	110	–	–	220	40	73	46	63	–	–	–	–	–	–	–	–	222
	Social Management	155	–	–	310	97	61	97	68	–	–	–	–	–	–	–	–	323
	Subtotal	265	–	–	530	137	134	143	131	–	–	–	–	–	–	–	–	545
Humanities	Humanities and Cultural Studies	–	–	–	230	–	–	–	–	49	63	55	74	–	–	–	–	241
	Social Science and Social System Studies	–	–	–	220	–	–	–	–	52	63	62	70	–	–	–	–	247
	Economics and Commercial Sciences	–	–	–	240	–	–	–	–	93	34	100	44	–	–	–	–	271
	Subtotal	–	–	–	690	–	–	–	–	194	160	217	188	–	–	–	–	759
Education	Teacher Training Division	150	–	–	590	78	81	81	73	72	68	83	83	–	–	–	–	619
	School Nurse Training Division	20	–	–	90	–	20	–	21	–	26	–	27	–	–	–	–	94
	Community Education Training Division	–	–	–	140	–	–	–	–	30	48	41	46	–	–	–	–	165
	Subtotal	170	–	–	820	78	101	81	94	102	142	124	156	–	–	–	–	878
Medicine	Medicine	112	20	–	760	52	62	104	58	87	45	85	41	76	42	86	50	788
	Health Sciences	200	–	30	860	69	135	64	138	66	134	76	146	–	–	–	–	828
	Subtotal	312	20	30	1,620	121	197	168	196	153	179	161	187	76	42	86	50	1,616
Science and Technology	Mathematics and Physics	78	–	–	156	70	8	65	14	–	–	–	–	–	–	–	–	157
	Frontier Materials Chemistry	52	–	–	196	37	15	41	11	38	7	37	12	–	–	–	–	198
	Global Environment and Disaster Prevention Sciences	65	–	–	130	49	17	50	16	–	–	–	–	–	–	–	–	132
	Electronics and Information Technology	55	–	–	226	57	2	50	6	52	4	62	3	–	–	–	–	236
	Mechanical Science and Engineering	80	–	–	160	72	9	75	4	–	–	–	–	–	–	–	–	160
	Sustainable Energy	30	–	–	60	25	5	24	8	–	–	–	–	–	–	–	–	62
	Mathematical Sciences	–	–	–	80	–	–	–	–	38	1	38	6	–	–	–	–	83
	Advanced Physics	–	–	–	80	–	–	–	–	36	3	41	3	–	–	–	–	83
	Earth and Environmental Sciences	–	–	–	116	–	–	–	–	34	24	45	19	–	–	–	–	122
	Intelligent Machines and System Engineering	–	–	–	116	–	–	–	–	50	6	55	8	–	–	–	–	119
	Common Faculty	–	–	10	20	–	–	–	–	3	2	4	–	–	–	–	–	9
Subtotal	360	–	10	1,340	310	56	305	59	251	47	282	51	–	–	–	–	1,361	
Agriculture and Life Science	Biology	40	–	–	160	26	15	30	8	28	16	26	23	–	–	–	–	172
	Biochemistry and Molecular Biology	40	–	–	160	25	16	19	19	24	17	31	20	–	–	–	–	171
	Applied Biology and Food Sciences	55	–	–	110	31	25	28	27	–	–	–	–	–	–	–	–	111
	International Agriculture and Horticulture	50	–	–	100	22	29	21	30	–	–	–	–	–	–	–	–	102
	Agricultural and Environmental Engineering	30	–	–	120	26	5	25	5	18	10	24	8	–	–	–	–	121
	Applied Bioscience	–	–	–	70	–	–	–	–	23	13	23	13	–	–	–	–	72
	Agriculture and Horticulture	–	–	–	80	–	–	–	–	22	18	26	21	–	–	–	–	87
	Subtotal	215	–	–	800	130	90	123	89	115	74	130	85	–	–	–	–	836
Total	1,322	20	40	5,800	776	578	820	569	815	602	914	667	76	42	86	50	5,995	

Graduate Schools

As of May 1,2017

Divisions		Annual Admission Capacity	Enrollment Capacity	Actual Enrollment								Total
				Freshmen		Sophomores		Juniors		Seniors		
				M	F	M	F	M	F	M	F	
Graduate Schools	Humanities and Social Sciences (Master's Course)	16	32	3	15	7	9	—	—	—	—	34
	Education (Master's Course)	16	48	5	16	17	24	—	—	—	—	62
	Education (Professional Degree Course)	16	16	11	7	—	—	—	—	—	—	18
	Medicine (Doctoral Course)	60	220	38	23	49	18	32	15	47	24	246
	Health Sciences (Master's Course)	30	60	17	15	35	14	—	—	—	—	81
	Health Sciences (Doctoral Course)	12	33	4	6	5	7	9	9	—	—	40
	Science and Technology (Master's Course)	120	240	94	12	105	16	—	—	—	—	227
	Science and Technology (Doctoral Course)	12	32	7	1	7	1	7	4	—	—	27
	Agriculture and Life Science (Master's Course)	60	120	35	22	23	12	—	—	—	—	92
Regional Studies (Doctoral Course)	6	18	4	5	5	1	16	5	—	—	36	
Total		348	819	218	122	253	102	64	33	47	24	863

Graduate Schools

Divisions		Annual Admission Capacity	Enrollment Capacity	Actual Enrollment								Total
				Freshmen		Sophomores		Juniors		Seniors		
				M	F	M	F	M	F	M	F	
The United Graduate School of Agricultural Sciences, Iwate University (Doctoral Course) Note: The current figure indicates the number of students who belong to Hirosaki University (supervising educators)		32	96	3	1	6	3	11	2	—	—	26

Attached School (Faculty of Education)

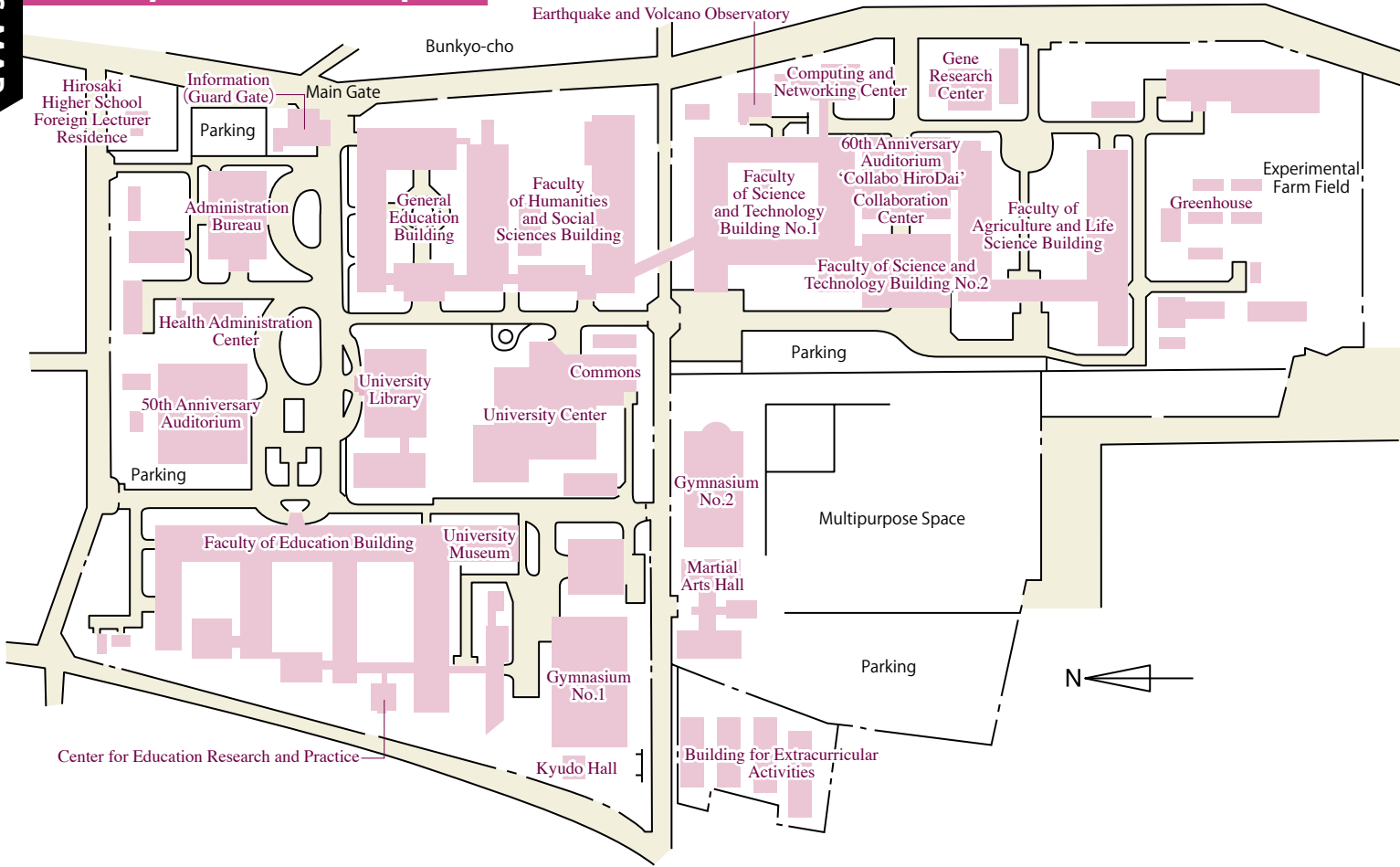
Divisions		Enrollment Capacity	Classes	Actual Enrollment							Total
				1st Year	2nd Year	3rd Year	4th Year	5th Year	6th Year		
Kindergarten		90	4	(3years) 19		(4years) 27		(5years) 29		75	
Elementary School		642	21	84	103	90	83	102	90	552	
Junior High School		495	15	161	161	164	—	—	—	486	
School for Special Needs Education	(Elementary)	18	3	(Lower) 5		(Middle) 5		(Higher) 5		15	
	(Junior High)	18	3	3	6	6	—	—	—	15	
	(Senior High)	24	3	8	8	8	—	—	—	24	
Total		1,287									1,167

Divisions	Faculties, etc.	Country/Region														Total					
		China	Taiwan	South Korea	Thailand	Malaysia	Singapore	Indonesia	Vietnam	Mongolia	Myanmar	Bangladesh	U.S.A.	France	Germany		Hungary	New Zealand	Algeria	Ethiopia	
Undergraduates	Private Regular Students	Humanities	10	1	1		2													14	
		Humanities and Social Sciences	1		1		2														4
		Education	1																		1
		Medicine	1								1										2
		Health Sciences	2	1																	3
		Science and Technology	5			1	1														7
		Agriculture and Life Science	1				1			3											5
	Private Research Students	Humanities and Social Sciences	6																		6
		Health Sciences	1																		1
		Science and Technology	1																		1
	Private Subject Students and Auditors	Humanities and Social Sciences	11		5	1							3	5	2	1	4				32
		Education	2		1	1															4
		Science and Technology	2										1								3
		Agriculture and Life Science	1																		1
Foreign Students funded by the Japanese Government (Ministry of Education, Culture, Sports, Science and Technology) Japanese Studies Scholarship Students	Humanities and Social Sciences				1															1	
Graduates	Foreign Students funded by the Japanese Government (Ministry of Education, Culture, Sports, Science and Technology) Regular Scholarship Students	Medicine													1					1	
		Science and Technology				1		2										2		5	
	Private Regular Students	Humanities and Social Sciences	10				1														11
		Education	4																		4
		Medicine	11																		11
		Health Sciences	2					1													3
		Science and Technology	7	1		1	2														11
		Agriculture and Life Science	10							1	1										12
		Regional Studies	3																		3
	Agricultural Sciences	5						1	1		1								1	9	
Special Research Students	Science and Technology	1																		1	
Total		98	3	8	6	9	1	3	5	1	1	1	3	6	2	2	4	2	1	156	

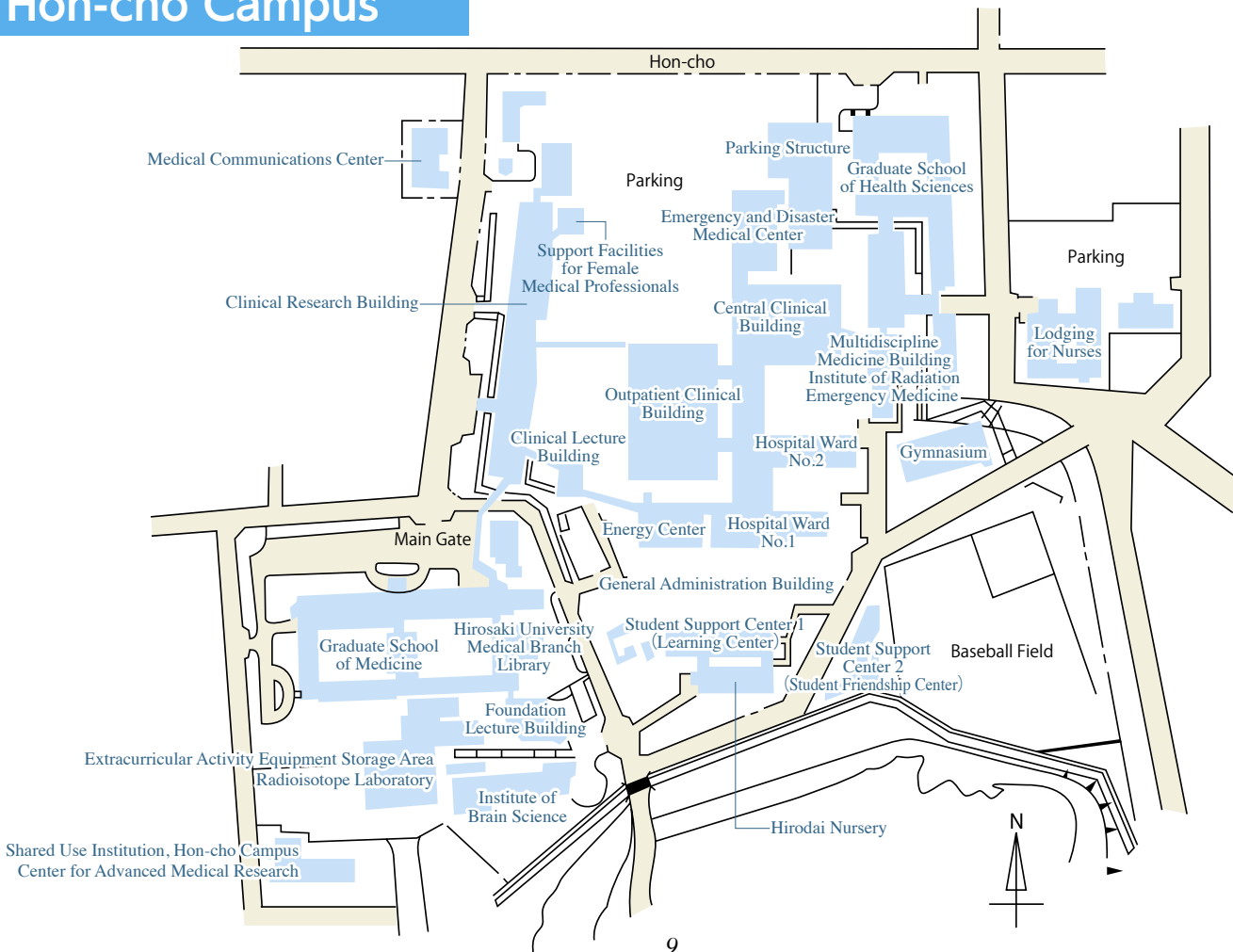
Country	University	Date of Agreement	Note
North America / South America			
U.S.A	University of Tennessee at Martin	Jul. 8, 1980	University wide Agreements
	University of Maine	Jun. 26, 1997	//
	San Diego State University	Mar. 19, 2001	//
	University of South Carolina	Jul. 20, 1994	Discipline-specific Agreements (Faculty of Education)
	University of Tennessee Center for the Health Sciences	May. 19, 1982	Discipline-specific Agreements (School of Medicine)
Canada	University of Saskatchewan	Dec. 7, 2001	University wide Agreements
	Mount Royal University	Jun. 1, 2005	//
	Thompson Rivers University	Oct. 19, 2006	//
Republic of Chile	University of La Frontera	Jun 25, 2002	University wide Agreements
United Mexican States	The Benito Juarez Autonomous University	May 13, 2016	University wide Agreements
Jamaica	The University of the West Indies	Feb. 25, 2002	Discipline-specific Agreements (School of Medicine)
Europe			
French Republic	University Bordeaux Montaigne	Jan. 31, 1994	University wide Agreements
Russian Federation	Far Eastern State Medical University	Dec. 14, 1995	University wide Agreements
	M. V. Lomonosov Moscow State University	Sep. 20, 2000	//
	Irkutsk State University	Mar. 20, 2002	//
	Botanical Garden – Institute Far Eastern Branch Russian Academy of Sciences	Feb. 20, 2015	Discipline-specific Agreements (The Shirakami Institute for Environmental Science)
Romania	Hyperion University	Sep. 11, 1998	University wide Agreements
Federal Republic of Germany	University of Trier	May. 3, 1999	University wide Agreements
Republic of Hungary	University of Debrecen	Dec. 22, 2000	University wide Agreements
	University of Pannonia, Faculty of Engineering, Institute of Radiochemistry and Radioecology	Mar. 18, 2013	Discipline-specific Agreements (Institute of Radiation Emergency Medicine)
Republic of Slovenia	Faculty of Medicine, University of Ljubljana	Nov. 28, 2014	Discipline-specific Agreements (School of Medicine)
Kingdom of Sweden	Centre for Radiation Protection Research, Stockholm University	Mar. 6, 2013	Discipline-specific Agreements (Graduate School of Health Sciences)
Republic of Finland	Ruralia Institute, University of Helsinki	Sep. 7, 2009	Discipline-specific Agreements (Faculty of Humanities and Social Sciences)
Oceania			
New Zealand	University of Otago	Sep. 20, 2000	University wide Agreements
	Auckland University of Technology	Dec. 12, 2001	//
East Asia			
People's Republic of China	Harbin Normal University	Aug. 1, 1995	University wide Agreements
	Yanbian University	Aug. 28, 2000	//
	Zhengzhou University	Oct. 12, 2000	//
	Dalian University of Technology	Dec. 28, 2009	//
	Xinjiang Institute of Engineering	Sep. 23, 2016	//
	Qingdao Agricultural University	Dec. 26, 2016	//
	Taiyuan University of Technology	Apr. 19, 2017	//

People's Republic of China	China Medical University	Oct. 25, 2005	Discipline-specific Agreements (School of Medicine)
	Department of Physics and Electronic Information Science, Hengyang Normal University	Nov. 11, 2014	Discipline-specific Agreements (Institute of Radiation Emergency Medicine)
	College of Horticulture, ShenYang Agricultural University	Nov. 3, 2015	Discipline-specific Agreements (Faculty of Agriculture and Life Science)
	National Institute for Radiological Protection, China CDC	May. 2, 2016	Discipline-specific Agreements (Institute of Radiation Emergency Medicine)
	School of Chemical Engineering, Sichuan University	Jun. 8, 2016	Discipline-specific Agreements (North Japan Research Institute for Sustainable Energy)
Republic of Korea	Nam Seoul University	Jun. 1, 2001	University wide Agreements
	Kyungpook National University	Jul. 11, 2001	//
	Pusan National University	Dec. 12, 2001	//
	Kyonggi University	Sep. 25, 2002	//
Republic of Korea	Korea Institute of Radiological and Medical Sciences (KIRAMS)	Jan. 21, 2013	Discipline-specific Agreements (Institute of Radiation Emergency Medicine)
	Dongnam Institute of Radiological & Medical Sciences (DIRAMS)	Jun. 14, 2016	Discipline-specific Agreements (Institute of Radiation Emergency Medicine)
Taiwan	National University of Kaohsiung	Nov. 17, 2016	University wide Agreements
	Kainan University	Nov. 18, 2016	//
Southeast Asia			
Kingdom of Thailand	Chiang Mai University	Nov. 2, 2000	University wide Agreements
	Khon Kaen University	May. 6, 2008	//
	Thammasat University	Apr. 14, 2017	//
	Faculty of Agriculture, Kasetsart University	May. 27, 2015	Discipline-specific Agreements (Faculty of Agriculture and Life Science)
	Chulalongkorn University, Faculty of Engineering, Department of Nuclear Engineering	Nov. 20, 2013	Discipline-specific Agreements (Institute of Radiation Emergency Medicine)
Malaysia	Universiti Tunku Abdul Rahman	Apr. 11, 2017	University wide Agreements
Republic of Indonesia	Institut Teknologi Bandung	May. 2, 2017	University wide Agreements
Socialist Republic of Viet Nam	Institute for Nuclear Science and Technology, Vietnam Atomic Energy Institute	Nov. 22, 2013	Discipline-specific Agreements (Institute of Radiation Emergency Medicine)
Republic of the Philippines	The Philippine Nuclear Research Institute	Jun. 30, 2015	//
Central Asia			
Republic of Uzbekistan	Tashkent State Agrarian University	Sep. 19, 2016	University wide Agreements
	Samarkand Agricultural Institute/University	Sep. 22, 2016	//

Bunkyo-cho Campus



Hon-cho Campus







**HIROSAKI
UNIVERSITY**

Hirosaki University Logo

■ Established July 24, 2006

■ **Concept**

The university's logo takes cherry blossoms, for which Hirosaki City has great pride, as its motif. Blossoms representing each of the school's five faculties are gathered together into one large blooming flower, facing the future. The circle in the center of the logo stands for the Earth, and expresses how graduates of Hirosaki University will make outstanding contributions to business and research, helping to make the world go round. In addition, the five different colors represent the different faculties: red for Medicine, orange for Education, green for Agriculture & Life Sciences, blue for Science & Technology, and purple for Humanities and Social Sciences. The image of the flowers scattered around the Earth like satellites also carries the meaning of Hirosaki University becoming a beacon for the region. Taken as a whole, the logo was designed to have a colorful, modern feel, brimming with freshness, vigor, and the energy of an enjoyable campus life.